

Superior breast imaging and needle visualization.



A compact and powerful imaging system with an intuitive touchscreen user interface for rapid and confident evaluation

For accurate tissue visualization, the **SONIMAGE® HS2** provides dynamic imaging along with enhanced needle guidance for therapeutic procedures in a compact design. The broad frequency linear probe, L18-4, scans both deep and superficial soft tissue structures.

- Superior image quality for on-target diagnosis
- Simple Needle Visualization (SNV®) improves needle visibility
- Easy to use intuitive touch screen

Ultrasound guidance for breast procedures.

Wideband frequency linear transducer

The SONIMAGE® HS2 L18-4 is a broad frequency linear probe that offers both near-field resolution and deep penetration for scanning both superficial and deep structures and soft tissue.

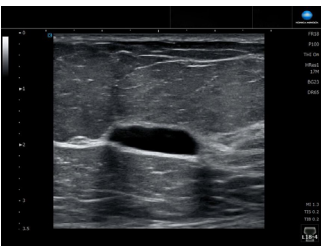


Visual confidence...at any angle

Needle visualization is essential for accurate and successful ultrasound-guided breast procedures. From breast biopsies to aspirations, ultrasound not only images the anatomical structures but also highlights the advancing needle.

Simple Needle Visualization (SNV®) software, incorporates an advanced algorithm that utilizes both in-plane and out-of-plane methods to improve needle visibility. Superior visualization is independent of the needle type and independent of the needle angle.

SNV provides greater needle visibility of the needle tip, shaft and injectate for accurate needle placement.



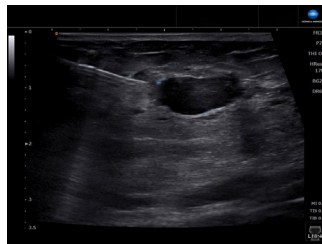
Breast Cyst



Fibroadenoma



Small Breast Cyst



Simple Needle Visualization (SNV®)



© 2020 Konica Minolta Healthcare Americas, Inc.



Konica Minolta Healthcare Americas, Inc.
411 Newark Pompton Turnpike
Wayne, New Jersey 07470
Tel: +1(973) 633-1500
healthcare.konicaminolta.us

M1674 0820 RevA