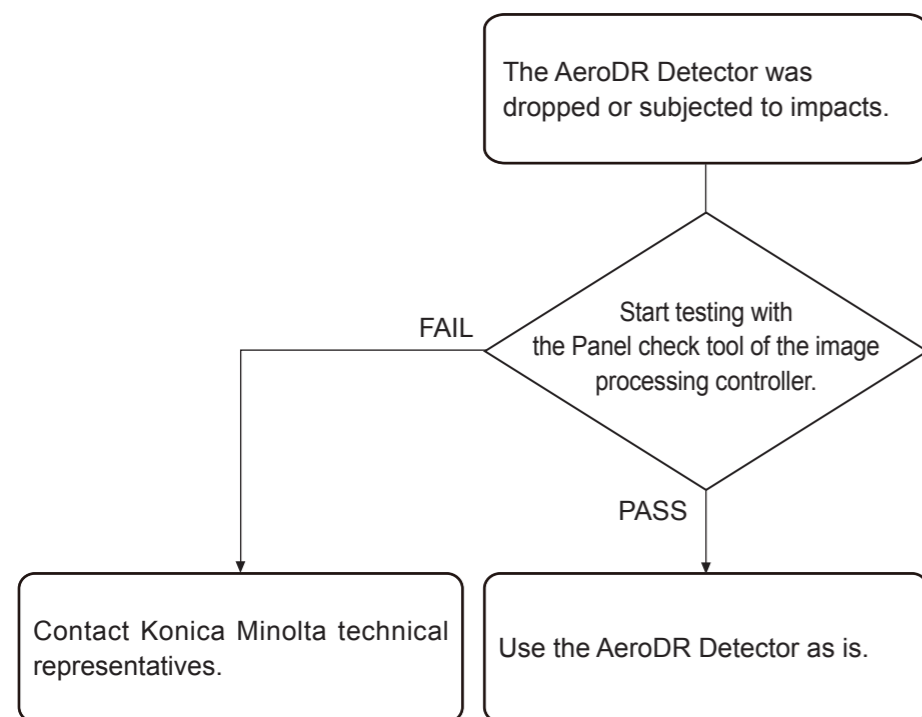


IMPORTANT

- If the exterior or protective cover is damaged extensively, contact Konica Minolta technical representatives.

1 Corrective actions

Run a test for the AeroDR Detector using the panel check tool of the image processing controller.



2 AeroDR Detector test

- 1 Confirm that this device, the image processing controller, is powered on.
- 2 Prepare for exposure with AeroDR Detector.
 - Place the AeroDR Detector on a stable worktable such as a desk.
 - Make sure that the image processing controller is properly connected to the AeroDR Detector.

IMPORTANT

- Never attempt to test the AeroDR Detector while the AeroDR Detector is connected to the following device.
 - AeroDR I/F Cable 2 of AeroDR Portable RF Unit
 - AeroDR I/F Cable 2 of AeroDR Battery Charging Unit
 - AeroDR Portable UF Detector Charger Kit

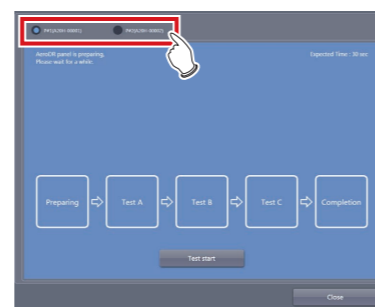
3 Start the panel check tool of the image processing controller.

- Press [Analysis] on the user tool screen of the image processing controller, and press [PanelCheck] in the [Test] area.
- The panel check tool screen is displayed.

HINT

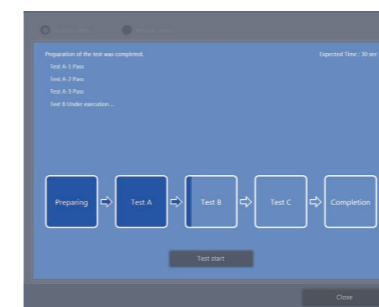
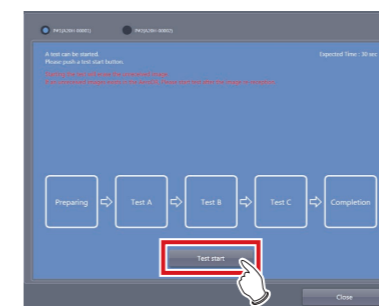
- When using CS-7, press [System] on the patient registration screen or the list screen, and start the user tool screen by pressing the [Setting] on the system monitor screen.
- When using ImagePilot, double-click to [Calibration] icon on the desktop, and start the user tool screen.

4 Select the AeroDR Detector to be tested.



- The status of the AeroDR Detector is displayed in the message display area.

5 Press [Test start].

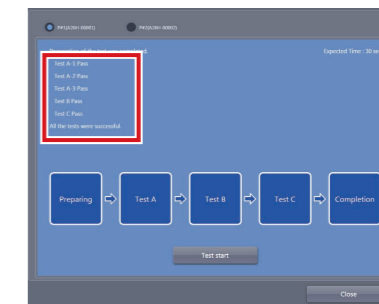
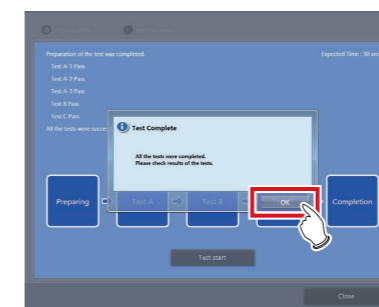


- The dark blue bar in the icon extends as the test progresses.
- The result and progress of the test are displayed in the message display area.
- When all the test processes are completed, a confirmation screen is displayed.

IMPORTANT

- If untransferred images remain in the AeroDR Detector, acquire those images before starting the test. The untransferred images in the AeroDR Detector will be deleted when the test starts.

6 Press [OK].



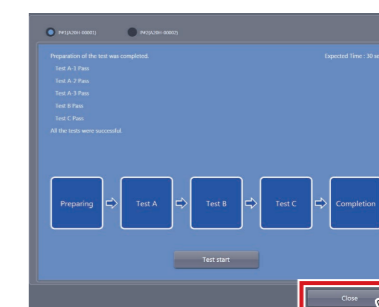
- The test results are displayed in the message display area.

HINT

- If the test fails, the icon and message are displayed in red.



7 Press [Close] to close the panel check tool screen.



- 8 When all the test processes are completed, and if all the test [successful], use the AeroDR Detector as is. If the test results are [failure], contact Konica Minolta Technical representatives.