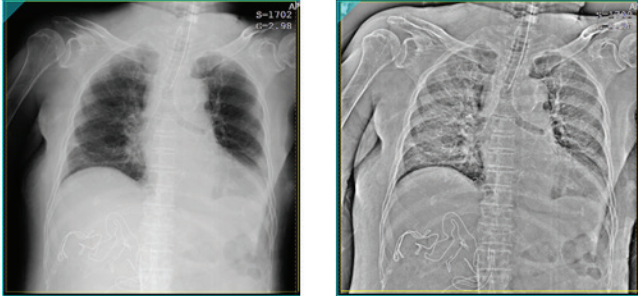


Tube/Gauze Enhancement

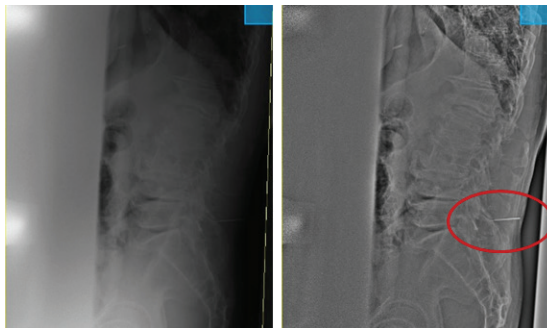


Chest



Ability to send both images to PACS, Automatically

Clinical Image & Processed Image Sent to PACS together or separately

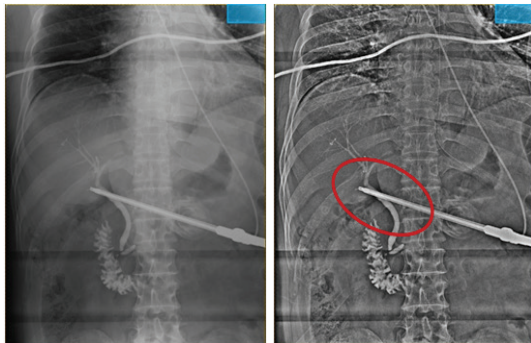


Lumbar Puncture

Optional/additional CS-7 Software application

Tube/Gauze Enhancement, an advanced image processing software, provides the ability to enhance a normal X-ray image by improving the appearance of fine objects. Examples are PIC lines and soft objects such as gauze.

The Clinical Image (processed for diagnosis) and the Enhanced Image (processed for object detection) can be sent to the PACS as separate images for improved patient care. This allows the receiver of the images to more easily gain access to specialized views for quicker diagnosis.



Cholangiography

Additional Exam Tags: Auditory organ, Cervical division, Side view of the lumbar spine, Cystography, Maniphalanx bones - overall view, Tarsal, Toe, Toe phalanges - overall view