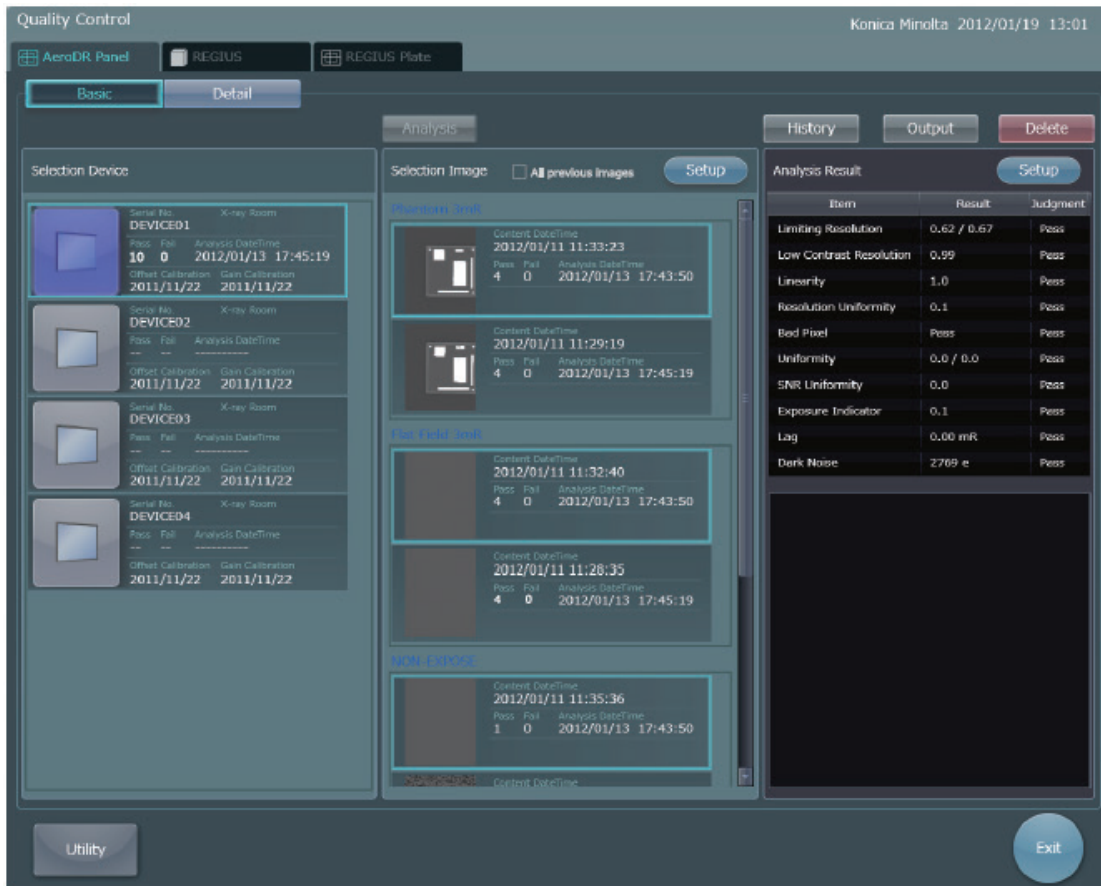


# SimpleCheck QC



## Optional/additional CS-7 Software application

*Clinical Confidence* is achieved with Konica Minolta's SimpleCheck QC, an automated QC program.

**SimpleCheck** is a comprehensive Quality Control program for all Konica Minolta CR and DR products. It provides automated analysis with customized reports including point values and graphs showing system and component performance. Know precisely where your systems are functioning in comparison to user customizable recommended operating limits.

SimpleCheck QC is designed to provide quality assurance/quality control of the CR/DR System. It includes functions that allow automatic calculation of the prescribed image for calculation of the evaluation value and display of the judgment/image evaluation histories.

- A phantom is needed to perform QC
- Facilities can share a phantom between devices, however, every device must have the SimpleCheck application to perform QC