



KONICA MINOLTA

PRIMARY IMAGING SOLUTIONS

Konica Minolta. Right Solutions. Right Time.

ULTRASOUND SYSTEM SONIMAGE HS1

Superior Imaging and Needle Visualization for Regional Anesthesia and Pain Management

Compact superior imaging system with an intuitive touchscreen user interface for rapid and confident ultrasound guided regional anesthesia and pain medicine procedures.

For confident needle placement, the SONIMAGE HS1 provides dynamic imaging along with enhanced needle guidance for peripheral nerve blocks, along with epidural and spinal anesthesia in a compact design. The broad frequency linear probe, L18-4, scans both deep and superficial structures. Intuitive gesture controls and focused exam presets minimize the user learning curve, with no need to navigate a knob cluttered keyboard.

- Superior image quality for confident diagnosis
- Simple Needle Visualization™ improves needle visibility
- Easy to use



Point-of-Care Hand-Carried Ultrasound System

Superior Image Guidance and Needle Visualization for Increased Efficiency and Precision

From the OR to the bedside, SONIMAGE HS1 delivers the superior image quality and needle visualization required for safe and successful ultrasound guided peripheral nerve blocks and epidural/spinal anesthesia.

Unlike conventional beam-steering technology, SONIMAGE HS1 incorporates an advanced algorithm that utilizes both the in-plane and out-of-plane methods to improve needle tip visibility, especially in steep angle approaches. The resulting clarity of the needle enables increased accuracy in needle placement, making the portable system an ideal solution for regional anesthesia and pain management guided injections.

Trapezoid imaging, found in the SONIMAGE HS1, further benefits the clinician by expanding the field of view, similar to a curved array. An expanded field of view maximizes the scanning area in technically difficult patients. In addition, a programmable foot switch is available for offloading functions to free an 'extra' hand.

Easy to Use

An intuitive touchscreen, eight button console, and focused guided-needle presets minimize the user learning curve, with no need to navigate a knob cluttered keyboard. Simply select a focused exam preset and relevant functions become accessible.

Giving Shape to Ideas

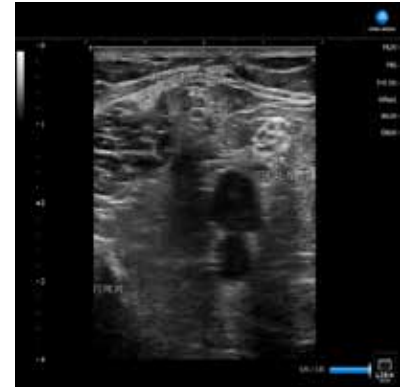
ULTRASOUND SYSTEM
SONIMAGE HS1

*Superior Imaging and Needle Visualization for
Regional Anesthesia and Pain Management*

- Portable, compact system
- Swivel 15" anti-glare monitor
- Lightweight ergonomic probes
- Intuitive touchscreen
- Simplified console
- Wireless connectivity
- Adjustable cart height



Occipital Nerve Block at C2



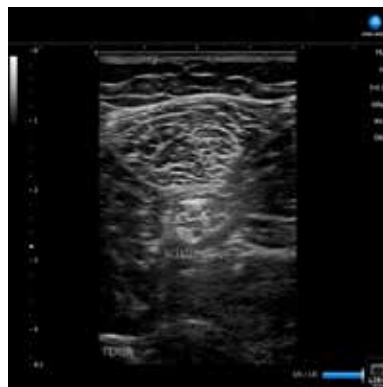
Peroneal-Tibial Nerves



Sacroccocygeal Joint



Sacroiliac Joint



Sciatic Nerve



Ulnar Nerve at the Elbow



KONICA MINOLTA

Konica Minolta Medical Imaging

411 Newark Pompton Turnpike

Wayne, NJ 07470

Tel: (973) 633-1500 Fax: (973) 523-7408

konicaminolta.com/medicalusa

KMMI SONIMAGE HS1 MSK 04/2016