



KONICA MINOLTA

PRIMARY IMAGING SOLUTIONS

Konica Minolta. Right Solutions. Right Time.

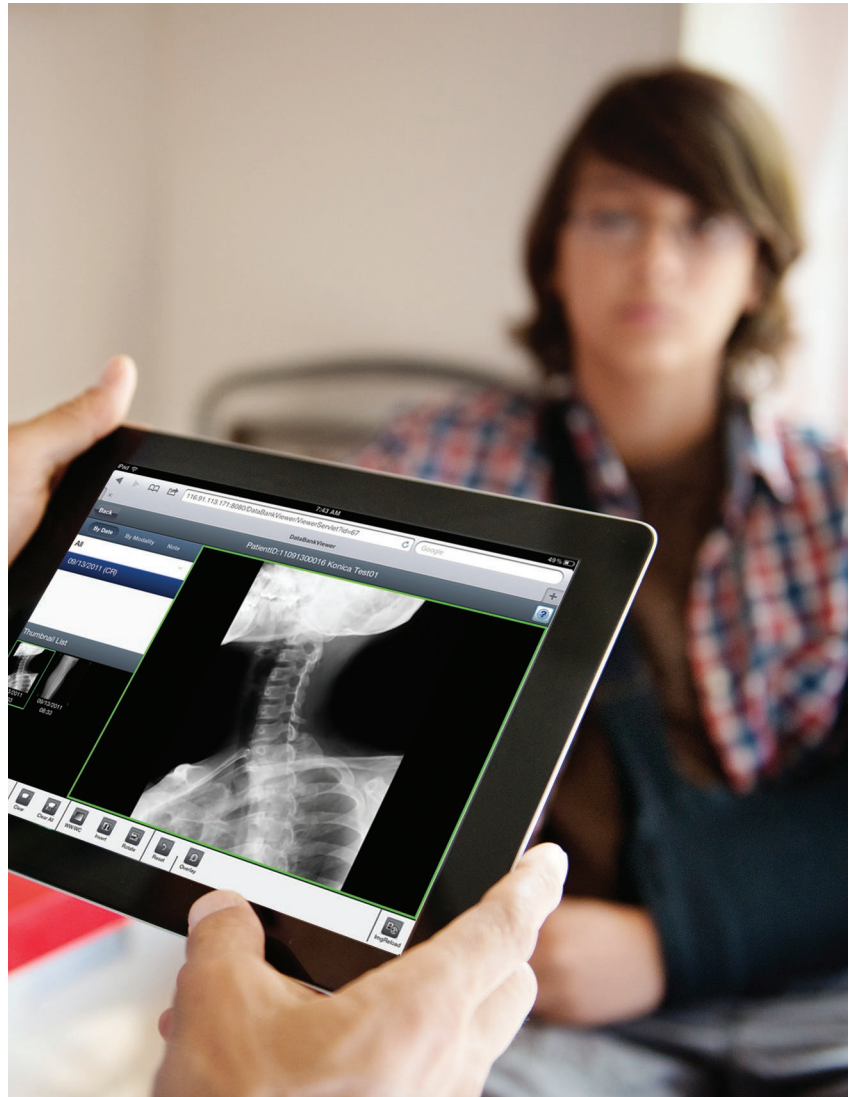
ImagePilot Aero

for Orthopedic Clinics

The simple, trouble free and financially intelligent solution for the busy orthopedic clinic.

Performance, exam flexibility and economic value are required by today's orthopedic clinics. ImagePilot Aero with advanced orthopedic toolsets meets the clinical and financial needs of today's busy orthopedic clinics.

- **Simple**
Easy to maneuver, lightweight DR panel with convenient grips. Easy-to-use advanced orthopedic toolsets. Scalable to meet your growing workflow needs.
- **Trouble free**
Strong, resilient, drop tolerant flat panel detector for use with all patient types.
- **Financially Intelligent**
Expand your reimbursable diagnostic imaging capacity without replacing your X-ray system. Only Konica Minolta offers a five-year Total Cost of Ownership plan that preserves your imaging investment and protects your data.



Simple

ImagePilot Aero for Orthopedic Clinics includes a lightweight, 14" x 17" wireless flat panel detector. The detector weighs just 5.7 lbs. and has convenient grip strips that make it simple to maneuver between diverse exams — from bucky to table to wall stand. With AeroSync automatic X-ray detection or a simple hand switch connection, it easily integrates with most X-ray systems. With all-in-one scalability and an array of workflow options, ImagePilot Aero meets your imaging needs today while allowing for future growth. Single click automatic image processing coupled with easy-to-use advanced orthopedic toolsets further enhances your clinical confidence.

Giving Shape to Ideas

ImagePilot Aero

The simple, trouble free and financially intelligent solution for the busy orthopedic clinic

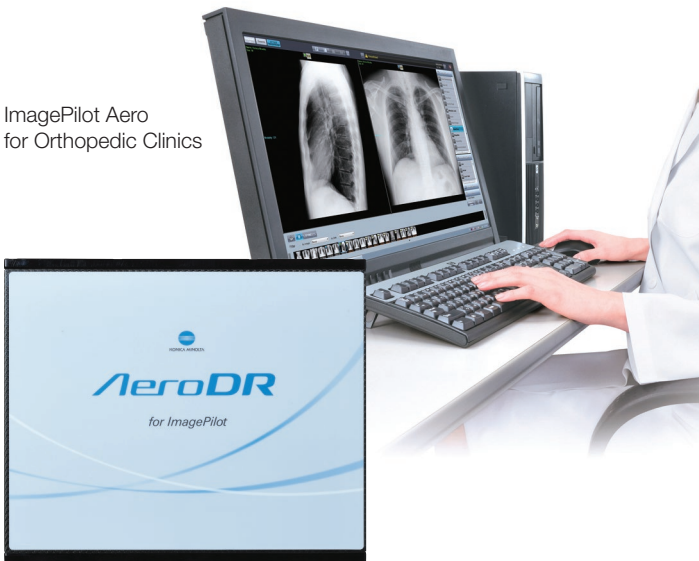
Trouble free

ImagePilot Aero includes the strongest, most resilient flat panel detector available today that can hold up to 300 kg (660 lbs.) distributed across the panel — so you can image your patients trouble free. Greater uptime is assured with drop tolerant construction and a long life rapid charge power cell. Konica Minolta's intuitive user interface design streamlines the imaging process for efficient, productive exams so you can minimize wait times and maximize patient satisfaction.

Financially Intelligent

Grow your practice with ImagePilot Aero and realize a better return on investment through improved patient care and reimbursable imaging capacity without replacing your existing X-ray equipment. Manage your ongoing costs with a five-year Total Cost of Ownership program that reduces workflow interruptions and mitigates catastrophic events by covering hardware and software and protecting patient data with Informity, Konica Minolta's cloud-based automatic backup service.

ImagePilot Aero
for Orthopedic Clinics



Added Value

• Advanced Orthopedic Measurements

Only Konica Minolta offers such a wide range of advanced orthopedic measurement tools. These tools include: spinal (Meyerding, Sagittal Diameters, and Cobb angles), hip (Sharp angle, acetabular head index (AHI), and CE Angle), shoulder and leg (femorotibial angle, descending ratio of humeral head, and CABA angle), and foot (Hallux Valgus angle, Bohler angle, and talocalcaneal angle).

• Long Length Imaging (Stitching)

Long length imaging options are available for scoliosis assessment and full leg imaging — from manual, multi-exposure DR stitching to CR augmented, automatic, single exposure stitching.

• Surgical Planning

Perform surgical planning including templating with OrthoView™ integrated workflow with full support of prosthetic libraries from leading manufacturers. (optional)

• Ultrasound Imaging for Orthopedics

Augment your diagnostic capabilities with the SONIMAGE HS1* hand-carry ultrasound system, which seamlessly integrates with ImagePilot Aero. Best in class imaging technology provides clear images of joints, tendons and muscles for injury diagnostics and needle positioning visualization for pain management procedures. (optional)

*Pending US FDA 510(k) clearance



KONICA MINOLTA

Konica Minolta Medical Imaging

411 Newark Pompton Turnpike

Wayne, NJ 07470

Tel: (973) 633-1500 Fax: (973) 523-7408

konicaminolta.com/medicalusa