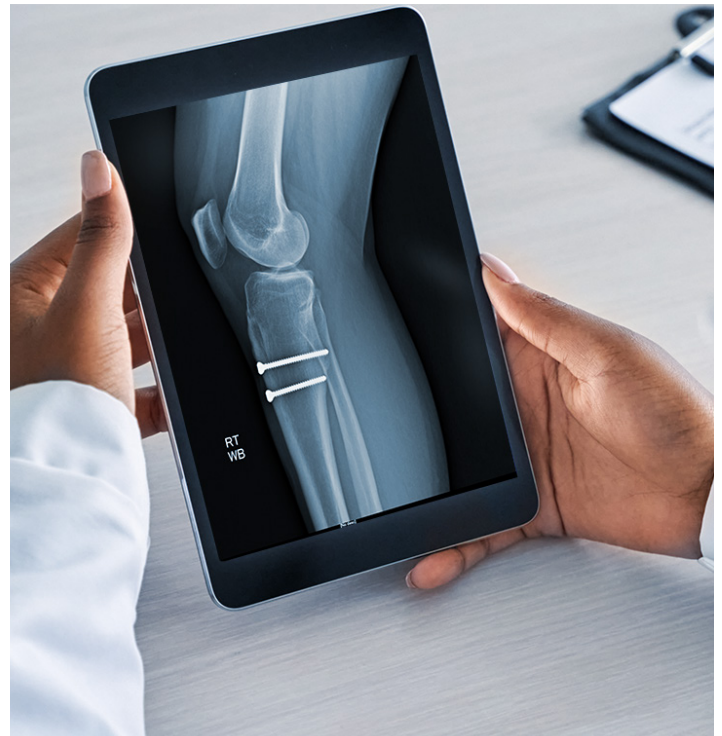


Level Up Your Ortho Practice

KDR | Advanced

exa-ORTHO



Do More With Less in Radiology Services

Orthopedic facilities are pressed to provide fast, efficient, and superior care while ensuring patient satisfaction. The solution is here with the KDR® Advanced U-arm X-ray System integrated with Exa® Ortho, which provides imaging and workflow tools to simplify ordering, acquisition, and interpretation of imaging.

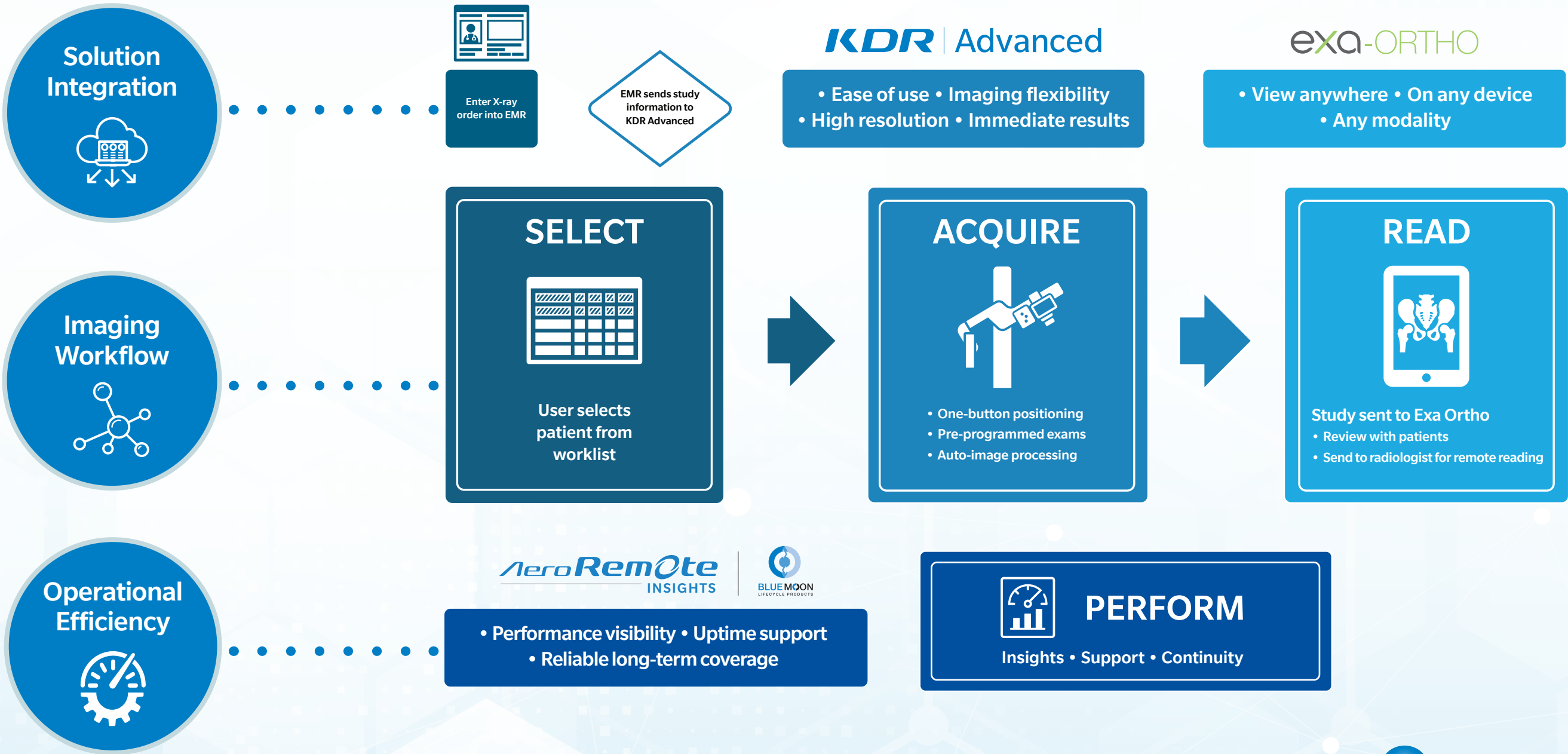
In 4 streamlined steps, orthopedic staff can **Select** the patient from the worklist, **Acquire** the X-ray image, **Read** the image locally or remotely on PACS, and **Perform** with operational visibility through AeroRemote® Insights—such as performance trends, utilization, and reject/repeat data—combined with Blue Moon Lifecycle support to help maintain system readiness throughout the day.

The KDR Advanced delivers powerful digital X-ray capabilities in a compact footprint, making it ideal for orthopedic facilities that need to perform general radiography in exam rooms with limited space and without highly specialized staff. When paired with Dynamic Digital Radiography, the KDR Advanced U-arm further elevates your practice's clinical capabilities by adding advanced motion imaging and greater diagnostic insight. Complementing the imaging hardware, Exa Ortho provides fast, anywhere access to images from any device—including tablets and phones—and offers the tools and features needed to optimize, streamline, and simplify your workflow.

When partnering with Konica Minolta, orthopedic clinicians will have the imaging power and workflow simplicity to make **better decisions, sooner.**

End-to-End Workflow Simplification

Advanced integration of PACS with automated X-ray and performance/lifecycle tools to streamline workflow and improve image quality



Konica Minolta Healthcare is a world-class provider and market leader in medical diagnostic imaging and healthcare information technology. The company's focus is to contribute to life-changing advances through the transformation of primary imaging, allowing the invisible to be seen. Primary imaging, the most commonly used medical imaging technology, includes X-rays, imaging management systems (PACS), advanced image processing, and services. By advancing these readily available technologies, we can bring greater diagnostic capabilities to the greatest number of people.

Learn more about **Konica Minolta Imaging Solutions** at healthcare.konicaminolta.us, or scan the QR code.

