


Multiplanar Reconstruction Tool

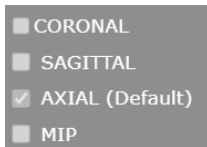
Use of MPR tools

Multiplanar reformation (MPR) creates images in orthogonal planes (axial, coronal, sagittal or MIP) relative to a base image. The MPR tool is hidden until you open a series.

Perform simple MPR

You can perform simple MPR to generate a single alternate planar view from the base view.


1. Select a series, and then double-select an image to view it in full screen.
2. Select the arrow on the right side of the MPR  button.
3. In the button shortcut menu, select a plane.



4. The viewer performs MPR and displays the newly selected plane.

Perform standard MPR

You can perform standard MPR to generate three additional planar views of the base image.

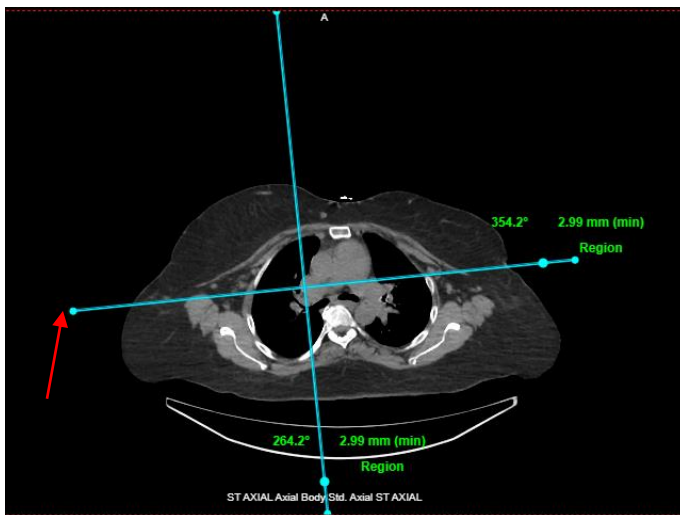
- Open a series, and then select the MPR  button.


Note: The plane of the base image determines the default MPR plane.



Manipulate MPR images

You can manipulate MPR images in the following ways by using controls in the base image.

- To move through MPR images, drag the blue region bars or scroll the mouse wheel in the series. You can also drag the endpoints to adjust the viewing angle of the reconstructions.

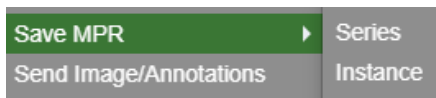


- To move both region bars at the same time, on the toolbar, select the context tool, and then drag on the base image. 

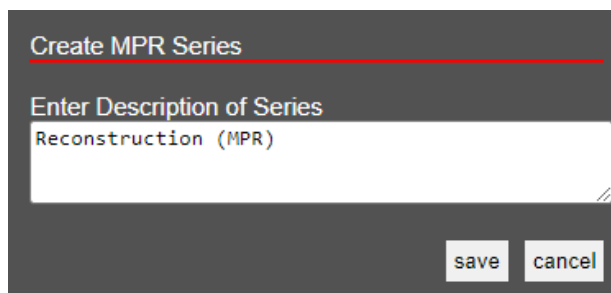
- To change the slice thickness, double-select the thickness value, and then type a new value (or drag the thickness value). 
- To change the slab width, select Region, double-select the slab width value that appears, and then enter a new value (or drag the slab width value). 
- To display an MPR image full screen with a large thumbnail of the base image, double-select an MPR image.

Saving MPR Images

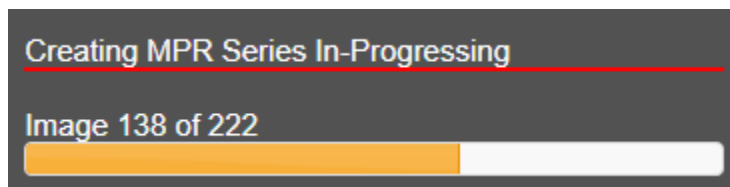
1. Select the series you wish to save with a single left click
2. Right click and select Save MPR. Images can be saved as an instance or a series.
 - a. Instance will save the single image currently displayed
 - b. Series will save all images in the MPR generated series



3. Rename or leave the default name of Reconstruction (MPR), select save



4. Once you hit save the MPR will generate. This may take several seconds depending on the amount of images.



5. The system will prompt you to reload the viewer in order to pull in the newly generated series for viewing after saving.

