

# Simple Needle Visualization for Konica Minolta Ultrasound Systems.



## Simple Needle Visualization (SNV<sup>®</sup>) software

Konica Minolta's SNV software incorporates an advanced algorithm that utilizes both the in-plane and out-of-plane methods to improve needle visibility, especially in steep angle approaches. The SNV feature lets you increase your accuracy in needle placement, making it the ideal solution for guided injections.

- Adjust the sensitivity of the needle visualization depending on the type of tissue
- Program prompts help determine the proper level of adjustment
- Auto setting takes the guesswork out of where to steer the ultrasound beam, or work manually by choosing the direction for beam placement
- Can be used with both linear and curved transducers
- Improve injection accuracy by visualizing injectate

# The ideal software solution for ultrasound needle guided injections.

## Needle visualization for rapid, confident decisions

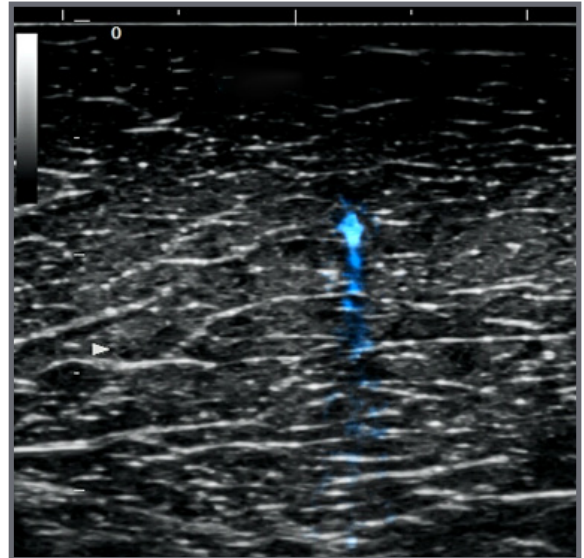
Needle visualization is essential for accurate and successful ultrasound-guided procedures. From regional anesthesia to biologic injections, ultrasound not only images the anatomical structures but also highlights the advancing needle. Simple Needle Visualization (SNV<sup>®</sup>) software, available with the SONIMAGE<sup>®</sup> HS2 and SONIMAGE<sup>®</sup> MX1 Ultrasound Systems, provides greater needle visibility of both the tip and shaft for confident needle placement.

## Easy to use

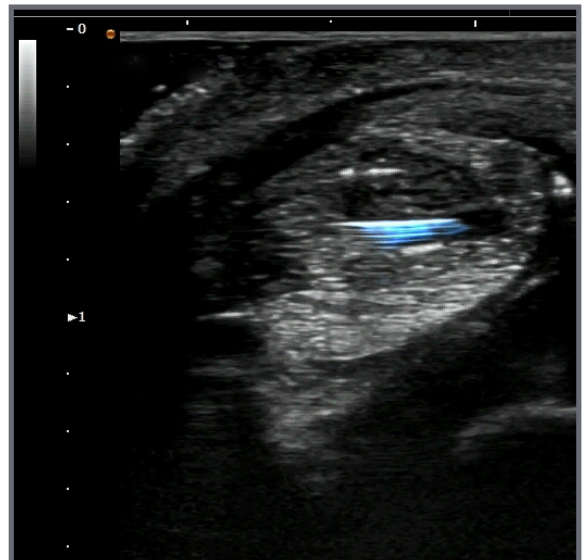
Konica Minolta ultrasound systems provide the accessibility and clinical confidence you need to make informed decisions at the point-of-care. Our ultrasound imaging solutions build economic value with a low total cost of ownership, improved workflow and reimbursable procedures. Our systems enhance patient satisfaction with immediacy of information and reduced patient wait times.

## Ordering information

UE00T54	SONIMAGE HS2 Advanced Ultrasound System
5905903	SONIMAGE HS2 Needle Visualization Software (SNV)
UE00T13	SONIMAGE MX1 Ultrasound System
UE00T13	SONIMAGE MX1 Needle Visualization Software (SNV)



SNV out-of-plane



SNV in-plane



SONIMAGE HS2, SONIMAGE MX1 and SNV are registered trademarks of Konica Minolta, Inc.  
© 2021 Konica Minolta Healthcare Americas, Inc.



KONICA MINOLTA

**Konica Minolta Healthcare Americas, Inc.**  
411 Newark Pompton Turnpike  
Wayne, New Jersey 07470  
Tel: +1 (973) 633-1500  
km.marketing@konicaminolta.com  
[healthcare.konicaminolta.us](http://healthcare.konicaminolta.us)

M1485 0519 RevB